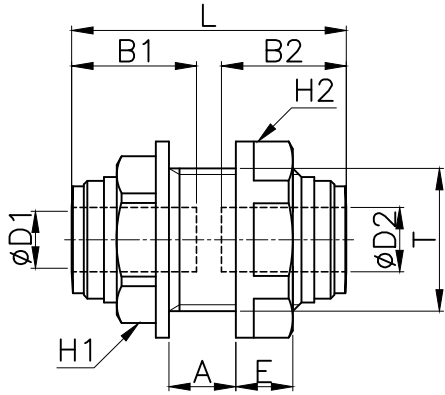


HMM



MODEL(mm)	$\phi D1$	$\phi D2$	T	L	E	A	B1 (TUBE DEEP)	B2 (TUBE DEEP)	H1 (Hex)	H2 (Hex)	WEIGHT (g)	EA (BOX)
HMM 0404	04	04	M15*1.5p	32.4	6.5	8.1	14.7	14.7	17	18	6.9	50
HMM 0604	06	04	M17*1.5p	35.5	7.0	9.4	16.1	14.7	19	21	9.8	50
HMM 0606	06	06	M17*1.5p	35.7	7.0	9.4	16.1	16.1	19	21	9.6	50
HMM 0806	08	06	M20*1.75p	38.1	8.0	9.4	17.5	16.1	21	25	14.3	25
HMM 0808	08	08	M20*1.75p	38.5	8.0	9.4	17.5	17.5	21	25	14.0	25
HMM 1010	10	10	M24*1.75p	42.2	8.5	11.1	20.1	20.1	24	28	19.5	25
HMM 1212	12	12	M27*2.0p	51.4	9.0	16.4	24.7	24.7	27	31	28.2	20