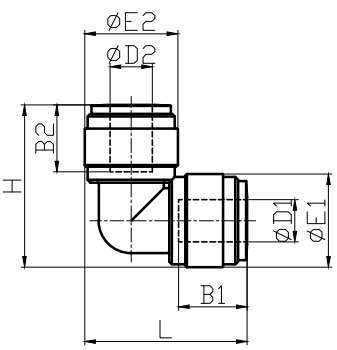


HUL



MODEL (mm)	$\phi D1$	$\phi D2$	B1 (TUBE DEEP)	B2 (TUBE DEEP)	$\phi E1$	$\phi E2$	L	H	WEIGHT (g)	EA (BOX)
HUL 0404	04	04	14.7	14.7	13.2	13.2	24.5	24.5	3.9	100
HUL 0606	06	06	16.1	16.1	15.0	15.0	27.6	27.6	5.1	100
HUL 1/4-06	6.5	5.3	16.9	16.1	15.5	15.5	28.7	28.7	5.5	100
HUL 0804	08	04	17.5	14.7	17.6	13.2	28.3	29.7	5.9	50
HUL 0806	08	06	17.5	16.1	17.6	17.6	30.7	30.3	7.7	50
HUL 0808	08	08	17.5	17.5	17.6	17.6	30.7	30.7	7.6	50
HUL 1006	10	06	20.1	16.1	23.0	17.6	37.8	36.1	12.6	50
HUL 1008	10	08	20.1	17.5	20.0	20.0	35.8	35.5	10.2	50
HUL 1010	10	10	20.1	20.1	20.0	20.0	35.8	35.8	10.2	50
HUL 1206	12	06	24.7	16.1	23.0	17.6	38.5	36.1	12.0	50
HUL 1208	12	08	24.7	17.5	23.0	17.6	38.5	36.5	11.9	50
HUL 1210	12	10	24.7	20.1	23.0	23.0	43.2	42.5	17.3	25
HUL 1212	12	12	24.7	24.7	23.0	23.0	43.2	43.2	16.4	25