

0°C ÷ 60°C



Working pressure:
from 0 to 10 Bar



Compressed air



- Taper gas BSPT ISO 7
from R1/8" to R1/2" with teflon
- Parallel gas BSPP ISO 228
from G1/8" to G1/2" with o-ring
- Metric ISO 262
M5 and M6



Polyamide PA, polyurethane PU



- Body: Nickel-plated brass and PBT
- Collet: POM
- Collar: Zinc
- Lock claw: Stainless steel AISI 301
- Back ring: POM
- Seal: NBR
- Spring: Stainless steel AISI 301
- Valve: POM

SILICONE FREE

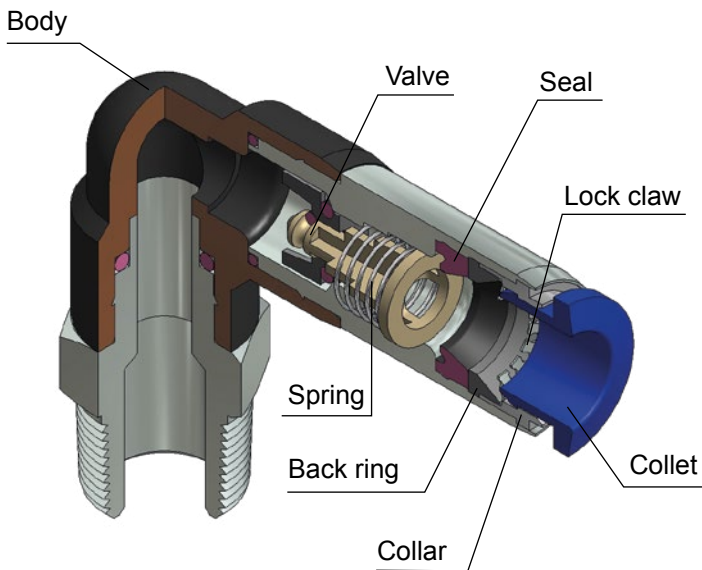


Products in compliance with
EC Regulation 1907/2006

RoHS3

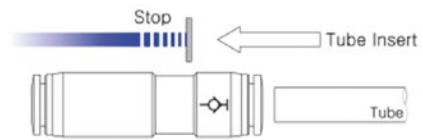
Products in compliance with
the directive EU 2015/863

CONSTRUCTION DETAILS

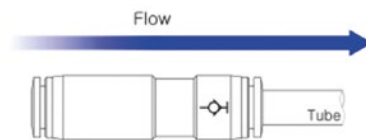


STOP FITTINGS

Stop fittings are designed to facilitate maintenance operations. They stop the flow of fluid when disconnected from the tube, and re-establish the flow of fluid in a bidirectional sense when reconnected.



Disconnection



Connection

TIGHTENING TORQUE
TAPER GAS BSPT ISO 7

THREAD	1/8"	1/4"	3/8"	1/2"
Nm	7	12	22	28

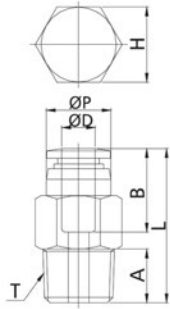
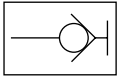
TIGHTENING TORQUE
PARALLEL GAS BSPP ISO 228 & METRIC ISO 262

THREAD	M5x0,8	M6x1	1/8"	1/4"	3/8"	1/2"
Nm	1,5	2,3	10	15	25	40



SPC-R

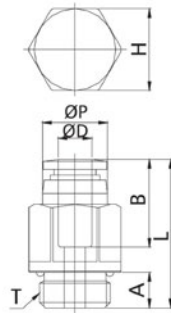
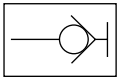
Male connector stop fitting BSPT thread



CODE	ØD	T	ØP	L	A	B	H	g
SPC04R01	4	R 1/8"	10,0	26,1	8,0	15,3	10	10,0
SPC06R01	6	R 1/8"	12,0	28,7	8,0	16,9	12	13,0
SPC06R02		R 1/4"	12,0	28,7	10,0	16,9	14	20,0
SPC08R02	8	R 1/4"	14,0	33,3	10,0	18,6	14	20,0
SPC08R03		R 3/8"	14,0	33,3	11,0	18,6	17	36,0
SPC10R02	10	R 1/4"	17,0	36,4	10,0	20,3	17	48,0
SPC10R03		R 3/8"	17,0	37,6	11,0	20,3	17	36,0
SPC10R04		R 1/2"	17,0	38,4	14,0	20,3	21	60,0
SPC12R02	12	R 1/4"	19,0	44,7	10,0	22,6	19	48,0
SPC12R03		R 3/8"	19,0	44,6	11,0	22,6	19	49,0
SPC12R04		R 1/2"	19,0	44,6	14,0	22,6	21	64,0

SPC-G

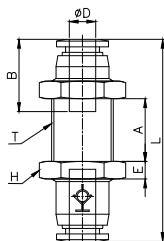
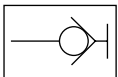
Male connector stop fitting BSPP thread



CODE	ØD	T	ØP	L	A	B	H	g
SPC04G01	4	G 1/8"	10,3	25,5	5,0	15,3	12	10,0
SPC06G01	6	G 1/8"	12,0	27,7	5,0	16,9	12	13,0
SPC06G02		G 1/4"	12,0	27,2	6,5	16,9	15	20,0
SPC08G02	8	G 1/4"	14,0	31,9	6,5	18,6	15	20,0
SPC08G03		G 3/8"	14,0	31,9	6,5	18,6	17	36,0
SPC10G02	10	G 1/4"	17,0	34,9	6,5	20,3	17	48,0
SPC10G03		G 3/8"	17,0	36,4	6,5	20,3	17	36,0
SPC10G04		G 1/2"	17,0	37,4	8,0	20,3	21	60,0
SPC12G02	12	G 1/4"	19,0	43,2	6,5	22,6	19	48,0
SPC12G03		G 3/8"	19,0	43,2	6,5	22,6	21	49,0
SPC12G04		G 1/2"	19,0	43,7	8,0	22,6	21	64,0

SPUM

Bulkhead connector stop fitting

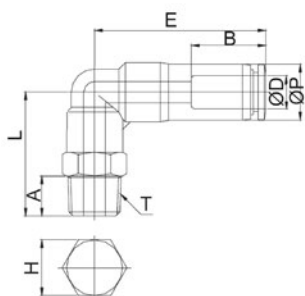
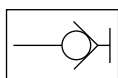


CODE	ØD	T	L	E	A MAX	B	H	g
SPUM04	4	M12x1	40,9	4	12,1	14,8	14	22,4
SPUM06	6	M14x1	45,9	4	14,1	16,4	17	32,2
SPUM08	8	M16x1	53,2	5	18,5	18,5	19	48,9
SPUM10	10	M20x1	58,6	5	20,8	20,3	24	81,2
SPUM12	12	M22x1	67,6	5	26,6	22,6	26	



SPL-R

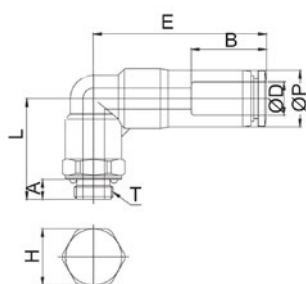
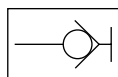
Male elbow stop fitting BSPT thread



CODE	ØD	T	ØP	L	E	A	B	H	g
SPL04R01	4	R 1/8"	10,0	24,5	29,5	8,0	14,8	10	15,0
SPL06R01	6	R 1/8"	12,0	26,5	32,8	8,0	16,4	12	22,0
SPL06R02		R 1/4"	12,0	29,5	32,8	10,0	16,4	14	27,0
SPL08R01	8	R 1/8"	14,0	28,0	42,9	8,0	18,4	14	32,0
SPL08R02		R 1/4"	14,0	31,0	42,9	10,0	18,4	14	38,0
SPL08R03		R 3/8"	14,0	32,0	42,9	11,0	18,4	17	44,0
SPL10R02	10	R 1/4"	17,0	31,5	49,0	10,0	20,2	17	57,0
SPL10R03		R 3/8"	17,0	32,5	49,0	11,0	20,2	17	64,0
SPL10R04		R 1/2"	17,0	35,5	49,0	14,0	20,2	21	80,0
SPL12R03	12	R 3/8"	19,0	35,4	57,5	11,0	22,4	19	78,0
SPL12R04		R 1/2"	19,0	38,4	57,5	14,0	22,4	21	91,0

SPL-G

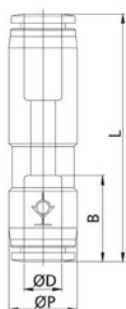
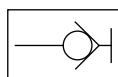
Male elbow stop fitting BSPP & metric thread



CODE	ØD	T	ØP	L	E	A	B	H	g
SPL04M5	4	M5x0,8	10,0	20,5	29,5	4,0	14,8	10	13,0
SPL04M6		M6x1,0	10,0	20,6	29,5	4,1	14,8	10	14,0
SPL04G01		G 1/8"	10,0	21,5	29,5	5,0	14,8	14	15,0
SPL06M5	6	M5x0,8	12,0	22,5	32,8	4,0	16,4	12	19,0
SPL06G01		G 1/8"	12,0	23,5	32,8	5,0	16,4	14	22,0
SPL06G02		G 1/4"	12,0	25,5	32,8	6,5	16,4	17	27,0
SPL08G02	8	G 1/4"	14,0	27,0	42,9	6,5	18,4	17	38,0
SPL08G03		G 3/8"	14,0	26,5	42,9	6,5	18,4	20	44,0
SPL10G02	10	G 1/4"	17,0	27,5	49,0	6,5	20,2	17	57,0
SPL10G03		G 3/8"	17,0	27,0	49,0	6,5	20,2	20	64,0
SPL10G04		G 1/2"	17,0	28,5	49,0	8,0	20,2	24	80,0
SPL12G03	12	G 3/8"	19,0	29,9	57,5	6,5	22,4	20	78,0
SPL12G04		G 1/2"	19,0	31,4	57,5	8,0	22,4	24	91,0

SPU

Union connector stop fitting



CODE	ØD	ØP	L	B	g
SPU04	4	10,5	41,7	16,2	5,0
SPU06	6	12,5	45,9	17,4	8,0
SPU08	8	14,8	52,8	18,9	11,0
SPU10	10	17,5	58,3	20,4	19,0
SPU12	12	20,5	67,1	23,0	30,0

