

NBR:  $-10^{\circ}\text{C} \div 95^{\circ}\text{C}$   
 FKM:  $-15^{\circ}\text{C} \div 200^{\circ}\text{C}$   
 EPDM:  $-40^{\circ}\text{C} \div 95^{\circ}\text{C}$   
 Standard version: NBR



**Working pressure:**  
 0-12 Bar (suggested)  
 35 Bar (max)

**Working pressure ACLD-25:**  
 0-12 Bar (suggested)  
 20 Bar (max)  
 0,30 Bar (min. opening pressure)



- Taper gas BSPT ISO 7  
 R1/4" and R3/8"  
 - Parallel gas BSPP ISO 228  
 G1/4" and G3/8"

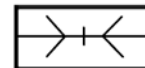
## NOMINAL DIAMETER

5,2 mm

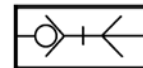
## FLOWRATE

636 l/min

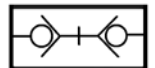
## CONFIGURATIONS



PL  
Free  
Passage



SO  
Single  
Shutter



DO  
Double  
Shutter

CD-25: Compressed air

CD-25-L: Compressed air, water, gas, non-aggressive mineral or synthetic oils and fluids suitable with construction materials

CD-25-X: Compressed air, water, grease, oils, mild acids, applications in oxidising or corrosive environments and fluids suitable with construction materials



Products in compliance with  
EC Regulation 1907/2006



Products in compliance with  
the directive EU 2015/863

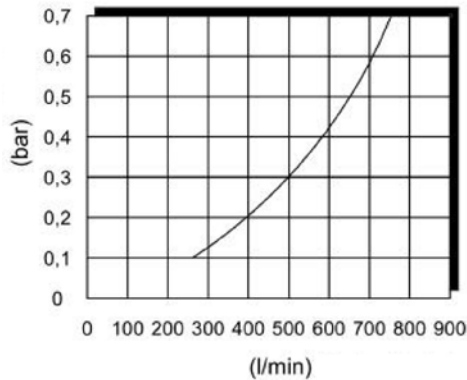
COMPONENTS	CD-25	CD-25-L	CD-25-X
Body	Nickel-plated steel	Brass	Stainless steel AISI 303
Slide	Nickel-plated steel	Brass	Stainless steel AISI 303
Valve	Stainless steel AISI 303	Stainless steel AISI 303	Stainless steel AISI 303
Spring	Stainless steel AISI 302	Stainless steel AISI 302	Stainless steel AISI 302
Washer	Stainless steel AISI 304	Stainless steel AISI 304	Stainless steel AISI 304
Clip	Stainless steel AISI 301	Stainless steel AISI 301	Stainless steel AISI 301
Pins	Stainless steel AISI 303	Stainless steel AISI 303	Stainless steel AISI 303
Seal	NBR - FKM - EPDM	NBR - FKM - EPDM	NBR - FKM - EPDM

CONNECTION	ACD-25	ACD-25-L	ACD-25-X
Body	Hardened nickel-plated steel	Brass	Stainless steel AISI 303

ACLD CONNECTION	ACLD-25-L	ACLD-25-X
Body	Brass	Stainless steel AISI 303
Spring	Stainless steel AISI 302	Stainless steel AISI 302
Retaining ring	Stainless steel AISI 302	Stainless steel AISI 302
Wrench	Brass	Stainless steel AISI 303
Wrench support	Brass	Stainless steel AISI 303
Seal	NBR - FKM - EPDM	NBR - FKM - EPDM

**FLOWRATE**

Chart created considering a working pressure of 6 Bar with a pressure drop of 0.5 Bar and simple shut-off.

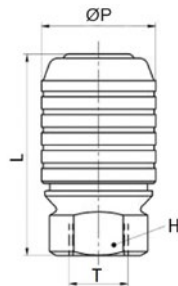


**VIEW - QUICK COUPLING CD-25**



**CD-25**

Female quick couplings BSPP thread

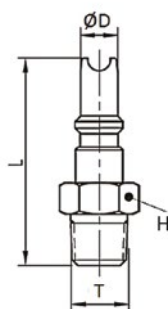


CODE	T	ØP	L	H
CD-25	G 1/4"	25,5	45,0	19
CD-25-PL	G 1/4"	25,5	45,0	19
CD-25-L	G 1/4"	25,5	45,0	19
CD-25-L-PL	G 1/4"	25,5	45,0	19
CD-25-X	G 1/4"	25,5	45,0	19
CD-25-X-PL	G 1/4"	25,5	45,0	19
CD-25-3/8	G 3/8"	25,5	45,0	19
CD-25-3/8-PL	G 3/8"	25,5	45,0	19
CD-25-3/8X	G 3/8"	25,5	45,0	19
CD-25-3/8X-PL	G 3/8"	25,5	45,0	19

-PL: Free passage

**ACD-25M**

Male connection BSPT thread

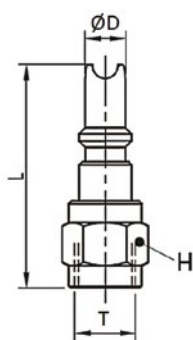


CODE	T	ØD	L	H
ACD-25M	R 1/4"	7,9	40,8	14
ACD-25M-L	R 1/4"	7,9	40,8	14
ACD-25M-X	R 1/4"	7,9	40,8	14
ACD-25M-3/8	R 3/8"	7,9	42,8	17
ACD-25M-3/8-X	R 3/8"	7,9	42,8	17



**ACD-25H**

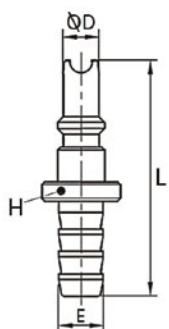
Female connection BSPP thread



CODE	T	ØD	L	H
ACD-25H	G 1/4"	7,9	40,3	17
ACD-25H-L	G 1/4"	7,9	40,3	17
ACD-25H-X	G 1/4"	7,9	40,3	17
ACD-25H-3/8	G 3/8"	7,9	41,8	20

**ACD-25E**

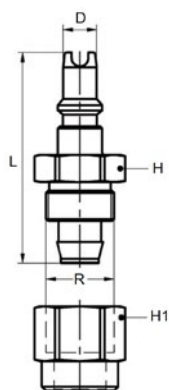
Connection with barb connector



CODE	E	ØD	L	H
ACD-25E	9,2	7,9	47,0	15
ACD-25E-L	9,2	7,9	47,0	15
ACD-25E-X	9,2	7,9	47,0	15
ACD-25E-10	11,2	7,9	47,0	15

**ACD-25PM**

Connection with push-on connector



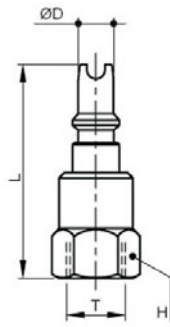
CODE	TUBE Ø	R	D	L	H	H1
ACD-25-PM08	8x12	M16x1	7,9	50,0	19	19
ACD-25-PM10	10x15	M20x1	7,9	54,7	22	22

Recommended for use with PU-PVC tube on page 751



**ACLD-25**

Female unidirectional connection BSPP thread



CODE	T	ØD	L	H
ACLD-25-L	G 1/4"	7,9	48,0	17
ACLD-25-X	G 1/4"	7,9	48,0	17

Do not use with CD-25N & CD-25S quick couplings

ACLD-25: Minimum opening pressure 0,30 Bar

