

-18°C ÷ +80°C



Working pressure:
12 Bar



Compressed air



- Taper gas BSPT ISO 7
from R1/8" to R1/2"
- Parallel gas BSPP ISO 228
from G1/4" to G1/2"



Body: Nickel-plated brass
Spring: Nickel-plated steel

PROFILE - GERMANY SERIES



NOMINAL DIAMETER

7,0 mm

AIR FLOWRATE

2000 l/min

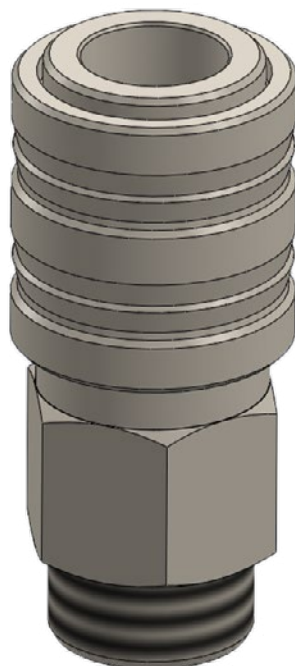


Products in compliance with
EC Regulation 1907/2006



Products in compliance with
the directive EU 2015/863

VIEW - QUICK COUPLING 8310FM



8310FM

Male quick coupling BSPT thread



CODE	THREAD	LENGTH	WRENCH
8310FM01	R 1/8"	50,0	19
8310FM02	R 1/4"	51,5	19
8310FM03	R 3/8"	51,5	19
8310FM04	R 1/2"	54,5	22

8320FF

Female quick coupling BSPP thread



CODE	THREAD	LENGTH	WRENCH
8320FF02	G 1/4"	51,4	19
8320FF03	G 3/8"	57,0	19
8320FF04	G 1/2"	54,3	25

8330RE

Quick coupling with barb connector



CODE	INT. TUBE Ø	LENGTH	WRENCH
8330RE06	6	38,5	19
8330RE07	7	61,5	19
8330RE08	8	63,1	19
8330RE09	9	63,3	19
8330RE10	10	65,7	19
8330RE11	11	66,0	19
8330RE12	12	66,7	19
8330RE13	13	66,3	19
8330RE14	14	66,5	19



8390PO

Quick coupling with hose connector



CODE	Ø	LENGTH	WRENCH 1	WRENCH 2
8390PO610	6x10	72,5	19	15
8390PO612	6x12	72,5	19	15
8390PO614	6x14	73,2	19	20
8390PO716	7x16	72,5	19	20
8390PO812	8x12	70,0	19	15
8390PO815	8x15	70,0	19	20
8390PO817	8x17	70,3	19	20
8390PO1019	10x19	76,4	19	20

8350MO

Quick coupling with push-on connector and spring



CODE	Ø	LENGTH	WRENCH 1	WRENCH 2
8350MO46	4x6	129,0	19	12
8350MO58	5x8	139,0	19	13
8350MO68	6x8	137,0	19	13
8350MO6510	6,5x10	140,0	19	15
8350MO810	8x10	139,5	19	15
8350MO812	8x12	142,5	19	17
8350MO1012	10x12	144,7	19	17

8360MM

Male connection BSPT thread



CODE	THREAD	LENGTH	WRENCH
8360MM01	R 1/8"	32,0	12
8360MM02	R 1/4"	33,5	14
8360MM03	R 3/8"	35,5	17
8360MM04	R 1/2"	38,4	22

8370FM

Female connection BSPP thread



CODE	THREAD	LENGTH	WRENCH
8370FM02	G 1/4"	33,1	15
8370FM03	G 3/8"	35,0	19
8370FM04	G 1/2"	38,0	25



8340PO

Connection with hose connector



CODE	Ø	LENGTH	WRENCH 1	WRENCH2
8340PO610	6x10	54,0	13	15
8340PO612	6x12	54,0	13	15
8340PO614	6x14	53,0	13	17
8340PO716	7x16	53,0	13	18
8340PO812	8x12	54,0	13	15
8340PO815	8x15	54,0	13	18
8340PO817	8x17	54,0	13	20
8340PO1019	10x19	58,0	13	22

8380RE

Connection with barb connector



CODE	INTERNAL TUBE Ø	LENGTH
8380RE06	6	39,4
8380RE07	7	59,0
8380RE08	8	63,4
8380RE09	9	41,3
8380RE10	10	63,5
8380RE11	11	63,5
8380RE12	12	63,6
8380RE13	13	66,3
8380RE14	14	66,7

8395MO

Connection with push-on connector and spring



CODE	Ø	LENGTH	WRENCH 1	WRENCH 2
8395MO46	4x6	110,0	13	12
8395MO58	5x8	119,5	13	13
8395MO68	6x8	120,0	13	13
8395MO6510	6,5x10	121,0	13	15
8395MO810	8x10	121,0	13	15
8395MO812	8x12	123,0	15	17
8395MO1012	10x12	121,0	15	17

