

-20°C ÷ 80°C
The temperature depend on the pipe's features used



Up to 60 Bar
Maximum working pressure depend on the pipe's features used



Compressed air, oil and fluids suitable with construction materials. Tube sites, ogives and locking nuts are manufactured in compliance with DIN 3870 - 3861.



Taper gas BSPT ISO 7 from R1/8" to R1/2"
Parallel gas BSPP ISO 228 from G1/8" to G1/2"



Metal tubes: brass, copper, steel and aluminum
Plastic tubes: polyethylene, Polyamide, PTFE, FEP using support bush (art. 3250)



Body: Lathed nickel plated brass
UNI EN 12164 CW 614N
Printed nickel plated brass
UNI EN12165 CW 617N

Lock nut: Nickel plated brass
UNI EN 12164 CW 614N

Ogive: Brass
UNI EN 12164 CW 614N



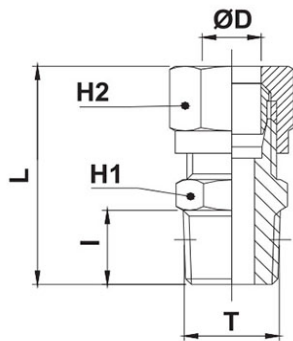
Products in compliance with the directive 2002/95/EC

RoHS2

Products in compliance with the directive 2011/65/EU

3100

Male connector BSPT thread



CODE	T	ØD	I	L	H1	H2	GR.
3100TR184	R1/8"	4	8,0	27,0	10	10	12,0
3100TR186	R1/8"	6	8,0	28,0	12	12	16,0
3100TR146	R1/4"	6	11,0	32,5	14	12	24,0
3100TR188	R1/8"	8	8,0	29,5	12	14	18,0
3100TR148	R1/4"	8	11,0	33,0	14	14	24,0
3100TR388	R3/8"	8	11,5	33,0	17	14	36,0
3100TR1410	R1/4"	10	11,0	37,5	17	19	44,0
3100TR3810	R3/8"	10	11,5	38,0	17	19	50,0
3100TR1210	R1/2"	10	14,0	40,5	22	19	74,0
3100TR3812	R3/8"	12	11,5	39,0	19	22	58,0
3100TR1212	R1/2"	12	14,0	41,0	22	22	78,0
3100TR1214	R1/2"	14	14,0	42,5	22	27	102,0
3100TR1215	R1/2"	15	14,0	42,5	22	27	96,0
3100TR1216	R1/2"	16	14,0	42,0	24	30	112,0
3100TR1218	R1/2"	18	14,0	43,0	26	32	126,0

