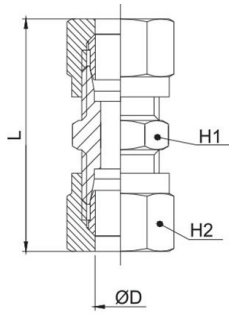


3180

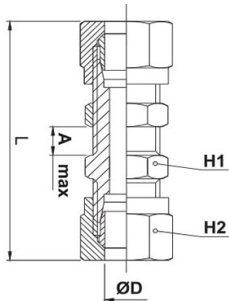
Union connector



CODE	ØD	L	H1	H2	GR.
3180TR4	4	33,5	10	10	16,0
3180TR6	6	36,5	12	12	25,0
3180TR8	8	38,5	14	14	28,0
3180TR10	10	47,5	17	19	66,0
3180TR12	12	50,5	19	22	93,0
3180TR14	14	55,5	24	27	148,0
3180TR15	15	55,5	24	27	140,0
3180TR16	16	58,0	24	30	177,0
3180TR18	18	60,0	26	32	198,0

3190

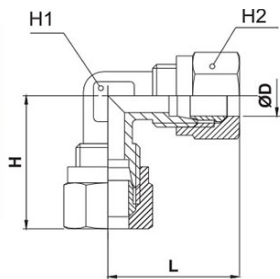
Bulkhead connector



CODE	ØD	A MAX	L	H1	H2	GR.
3190TR6	6	15,5	51,5	14	12	32,0
3190TR8	8	16,5	55,5	16	14	42,0
3190TR10	10	15,5	62,5	19	19	90,0
3190TR12	12	16,0	64,5	22	22	116,0
3190TR14	14	18,0	69,5	25	27	192,0
3190TR15	15	18,0	69,5	25	27	184,0

3200

Union elbow connector



CODE	ØD	L1	L2	H1	H2	GR.
3200TR4	4	21,0	21,0	9	10	18,0
3200TR6	6	23,0	23,0	9	12	22,0
3200TR8	8	24,0	24,0	11	14	30,0
3200TR10	10	32,0	32,0	13	19	70,0
3200TR12	12	34,5	34,5	15	22	94,0
3200TR14	14	38,0	38,0	17	27	152,0
3200TR15	15	38,0	38,0	17	27	144,0
3200TR16	16	39,5	39,5	19	30	186,0
3200TR18	18	44,0	44,0	22	32	228,0

