

20°C ÷ +120°C
subject to applications



up to 14 Bar at 20°C
depending from the used tube



Compressed air, water and food
fluids suitable with construction
materials



Taper gas BSPT ISO 7
from R1/8" to R1"



Polyurethane, Polyethylene,
polyamide, silicon, PTFE, FEP



Polyvinylidene fluoride (PVDF)

FEATURES

Fittings made of pvdf can function well, even when exposed to a wide range of temperatures and high corrosive chemicals

Available on demand with INCH tube and NPT thread



Products in compliance with the directive 2002/95/EC

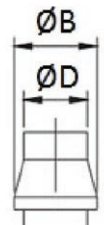
RoHS2

Products in compliance with the directive 2011/65/EU



DIAMETER OF THE BARB

ØD	Ø 4 mm	Ø 5 mm	Ø 6 mm	Ø 8mm	Ø 10 mm	Ø 12 mm	Ø 14 mm	Ø 16 mm	Ø 19 mm
ØB (mm)	5,2 mm	6,3 mm	8,0 mm	10,0 mm	12,0 mm	14,0 mm	16,2 mm	18,2 mm	21,0 mm



PRECAUTIONS

- The products are made in plastic and it's necessary to use teflon coating over the thread for installation in order and to prevent air leakage. Be sure to prevent excessive torque when screwing the fittings.
- To connect the tube, insert the tube to the end and tight the cap before use.
- Cut the pressed part of the tube before connection to reuse the released tube

RECOMMENDED TIGHTENING TORQUE

THREAD SIZE	NM	FT LB
1/8	0,1	0,07
1/4	1	0,8
3/8	5	3
1/2	8	6
3/4	16	12

