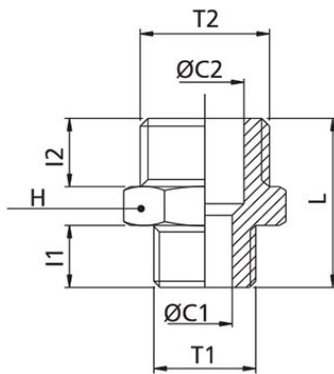


1107

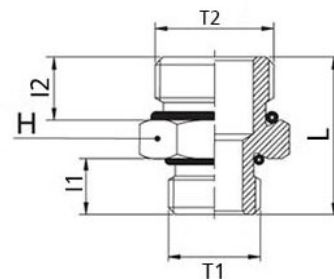
Reduced nipple BSPP & metric thread



CODE	T1	T2	ØC1	ØC2	I1	I2	L	H	GR.
1107TRM518	M5	G1/8"	2,5	6,0	5,0	6,5	15,5	14	7,0
1107TR1814	G1/8"	G1/4"	5,5	8,5	6,5	8,0	19,0	17	14,0
1107TR1838	G1/8"	G3/8"	5,5	11,5	6,5	9,0	20,5	19	19,0
1107TR1438	G1/4"	G3/8"	8,5	11,5	8,0	9,0	22,0	19	19,0
1107TR1412	G1/4"	G1/2"	8,0	15,0	9,0	10,0	24,5	24	35,0
1107TR3812	G3/8"	G1/2"	11,0	15,0	9,0	10,0	24,5	24	36,0
1107TR3834	G3/8"	G3/4"	11,0	20,0	10,0	11,0	26,5	30	52,0
1107TR1234	G1/2"	G3/4"	15,0	20,0	11,0	11,0	27,5	30	52,0
1107TR341	G3/4"	G1"	20,0	25,5	11,0	13,0	30,0	36	71,0

1108

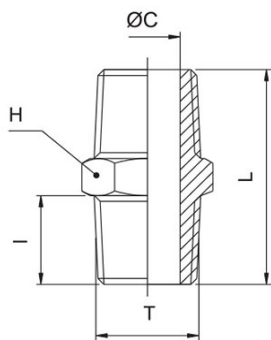
Reduced nipple BSPP thread with OR



CODE	T1	T2	L	I1	I2	H	GR.
1108TR1814	G1/8"	G1/4"	19,5	6,5	8	17	14,0
1108TR1838	G1/8"	G3/8"	21	6,5	9	20	22,0
1108TR1438	G1/4"	G3/8"	22	8	9	20	24,0
1108TR1412	G1/4"	G1/2"	24	8	10	24	34,0
1108TR3812	G3/8"	G1/2"	25	9	10	24	34,0

1110

Nipple BSPT thread



CODE	T	ØC	I	L	H	GR.
1110TR18	R1/8"	6,0	7,5	19,0	12	7,0
1110TR14	R1/4"	7,5	11,0	26,5	14	16,0
1110TR38	R3/8"	11,5	11,0	27,0	17	23,0
1110TR12	R1/2"	15,0	12,5	30,5	22	79,0
1110TR34	R3/4"	20,0	14,0	34,5	27	61,0
1110TR1	R1"	26,0	15,5	37,0	34	92,0

