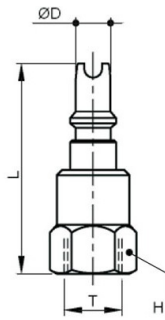


**ACLD-25**

Unidirectional connection with check valve, DN 5,2

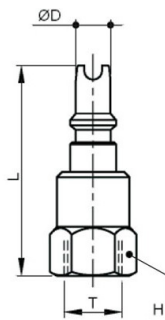


| CODE      | T     | ØD  | L  | H  |
|-----------|-------|-----|----|----|
| ACLD-25-L | G1/4" | 7,9 | 48 | 17 |
| ACLD-25-X | G1/4" | 7,9 | 48 | 17 |

Only for CD-25  
Do not used with CD-25N

**ACLD-50**

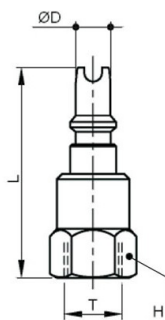
Unidirectional connection with check valve, DN 7



| CODE      | T     | ØD   | L    | H  |
|-----------|-------|------|------|----|
| ACLD-50-L | G3/8" | 10,3 | 58,5 | 22 |
| ACLD-50-X | G3/8" | 10,3 | 58,5 | 22 |

**ACLD-100**

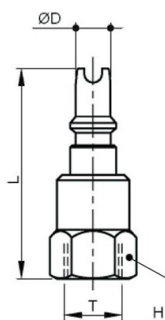
Unidirectional connection with check valve, DN 10,5



| CODE       | T     | ØD   | L  | H  |
|------------|-------|------|----|----|
| ACLD-100-L | G1/2" | 14,3 | 70 | 27 |
| ACLD-100-X | G1/2" | 14,3 | 70 | 27 |

**ACLD-150**

Unidirectional connection with check valve, DN 14



| CODE            | T     | ØD | L  | H  |
|-----------------|-------|----|----|----|
| ACLD-150-L      | G3/4" | 19 | 93 | 34 |
| ACLD-150-X      | G3/4" | 19 | 93 | 36 |
| ACLD-150X-316   | G3/4" | 19 | 93 | 36 |
| ACLD-150L-P     | G1"   | 19 | 93 | 40 |
| ACLD-150X-P     | G1"   | 19 | 93 | 41 |
| ACLD-150X-316-P | G1"   | 19 | 93 | 41 |

