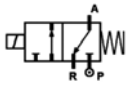


3/2 WAY DIRECT ACTING PILOT VALVES



normally closed

TYPE: B356 / B326 / D326

TECHNICAL SPECIFICATIONS

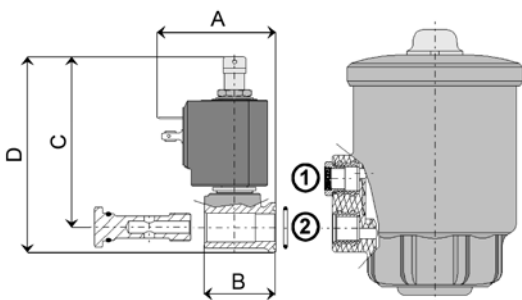
Media: water, inert gases, air
Media temperature: -10°C ... +60°C
Ambient temperature: -10°C ... +60°C
Body material: brass (CW614N EN 12165) with electroless nickel plating treatment
Operator material: stainless steel
Seal material: FKM
Coil power Series 2000: AC 10VA (holding) AC 16VA (inrush) DC 7W
Coil power Series 7000: AC 18VA (holding) AC 36VA (inrush) DC 14W
Protection class: IP 65 (with connector)



BENEFITS

- Standard manual override and electroless nickel plating treatment
- Expressly designed to pilot M&M Piston Valves
- Valve rotation by 360° around port

SELECTION TABLE	VALVE	actuator	hose connection	DN orifice	flow rate Kvs	OPD		COILS		
						min	max	Code	(Volts/Hz)	
	Code				(mm)		(bar)	AC	DC	
B356CVCMK	Ø 45	"push-in" pneumatic fitting for 6mm external Ø tube	1.5	0.7	0	10	10		2250	24/dc
B326CVCMK	Ø 63		1.5	0.7	0	10	10	2200	24/50 - 60	
D326CVEMK	Ø 90		2.0	1.3	0	10	10	2400	110/50 - 120/60	
									2600	200/50 - 220/60
									2700	230/50 - 240/60
									7250	24/dc
									7200	24/50 - 60
									7400	110/50 - 120/60
									7600	200/50 - 220/60
									7700	230/50 - 240/60



- Screw the pilot valve bolt into the inlet port of the piston valve actuator using a maximum torque level of 5 Nm:
- into hole 1, if the piston valve is **NORMALLY OPEN (RPG/RCG)**
 - into hole 2, if the piston valve is **NORMALLY CLOSED (PG-BPG/CG-BCG)**

DIMENSIONS & WEIGHTS

Valve	A	B	C	D	weight
-	(mm)	(mm)	(mm)	(mm)	(Kg)
B356	48	31	66.5	76.5	0.25
B326	51.5	34.5	66.3	78.3	0.25
D326	57	34.5	82.6	94.6	0.30